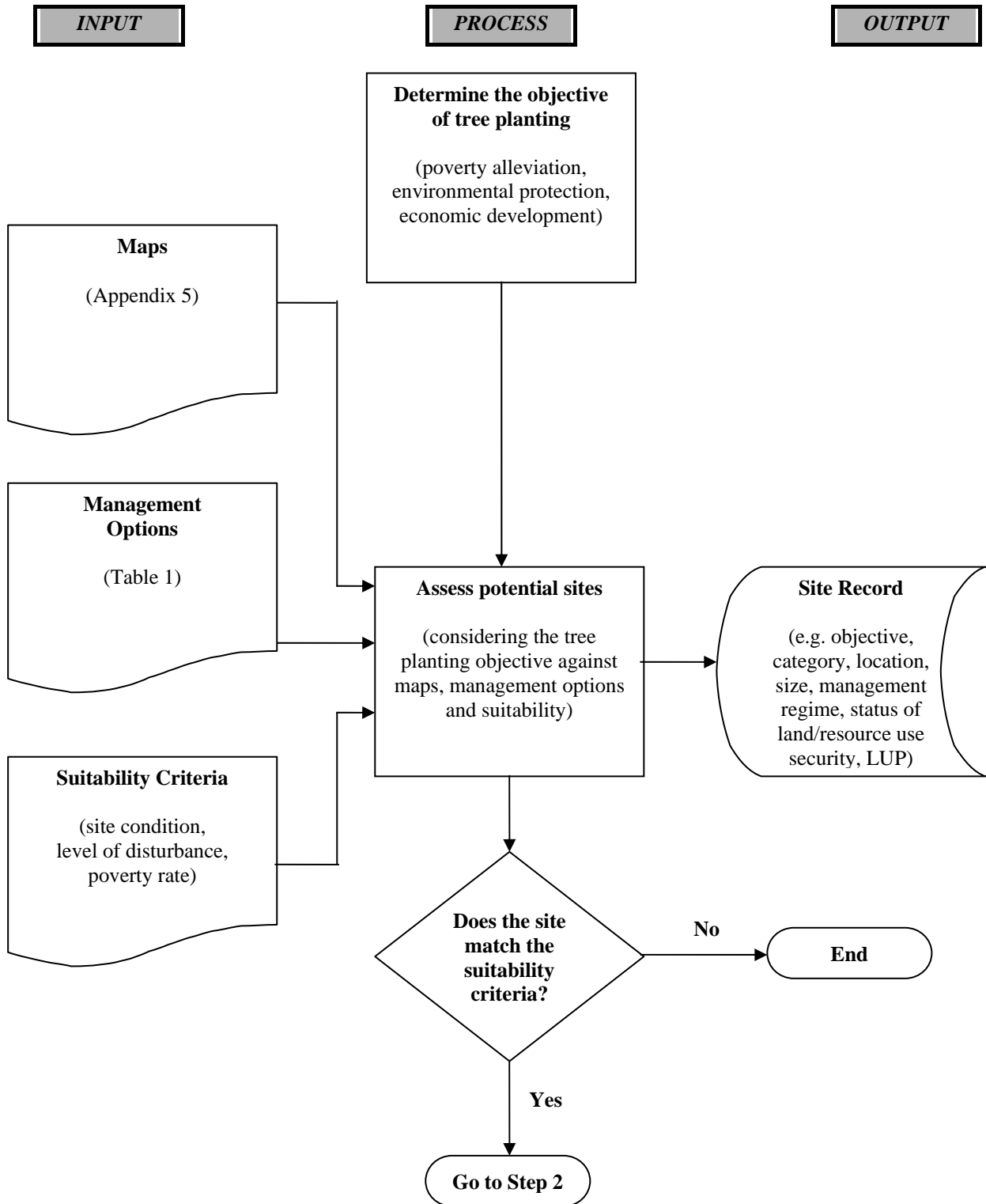
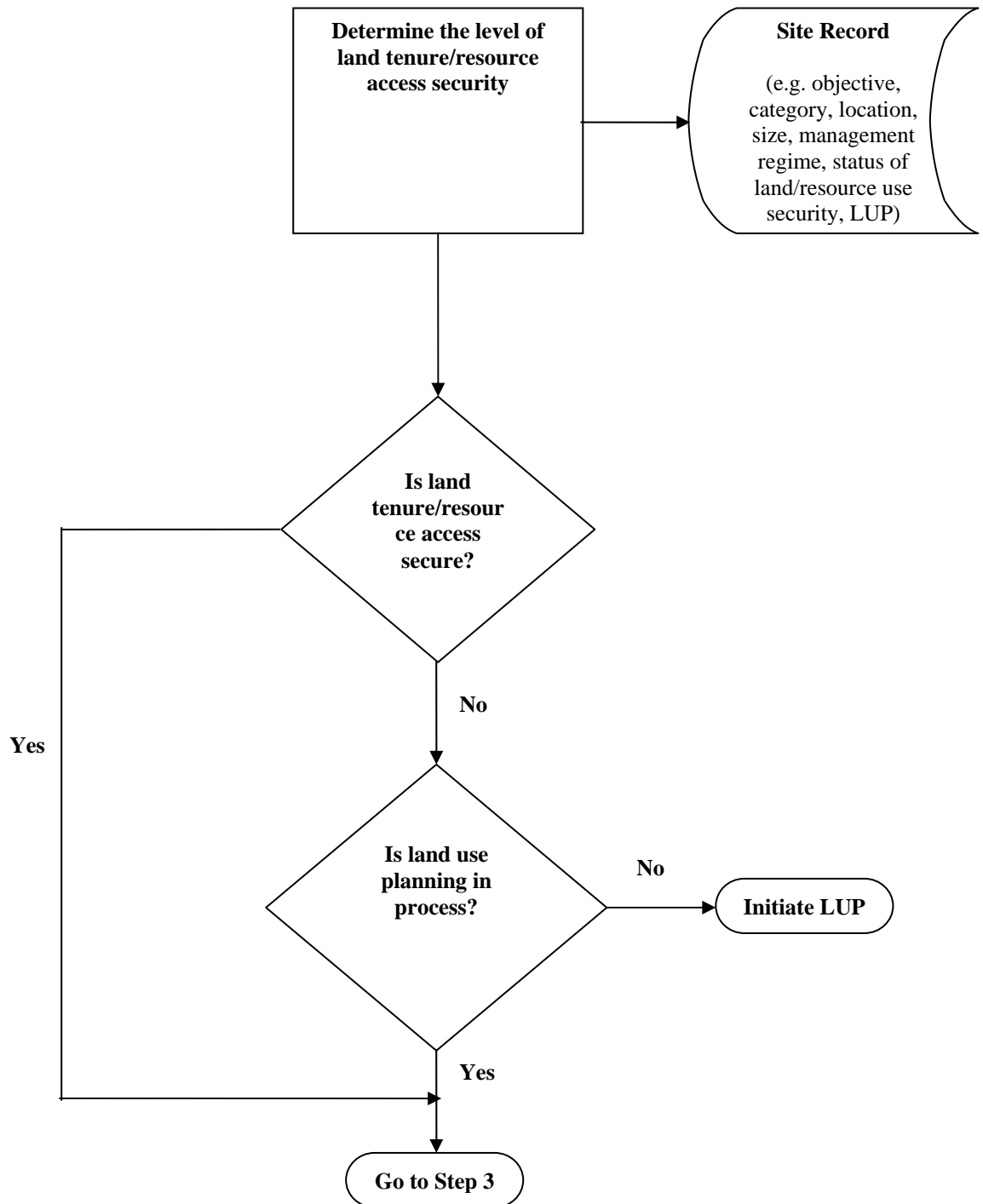


Appendix 1: Identification of Priority Areas for Tree Planting

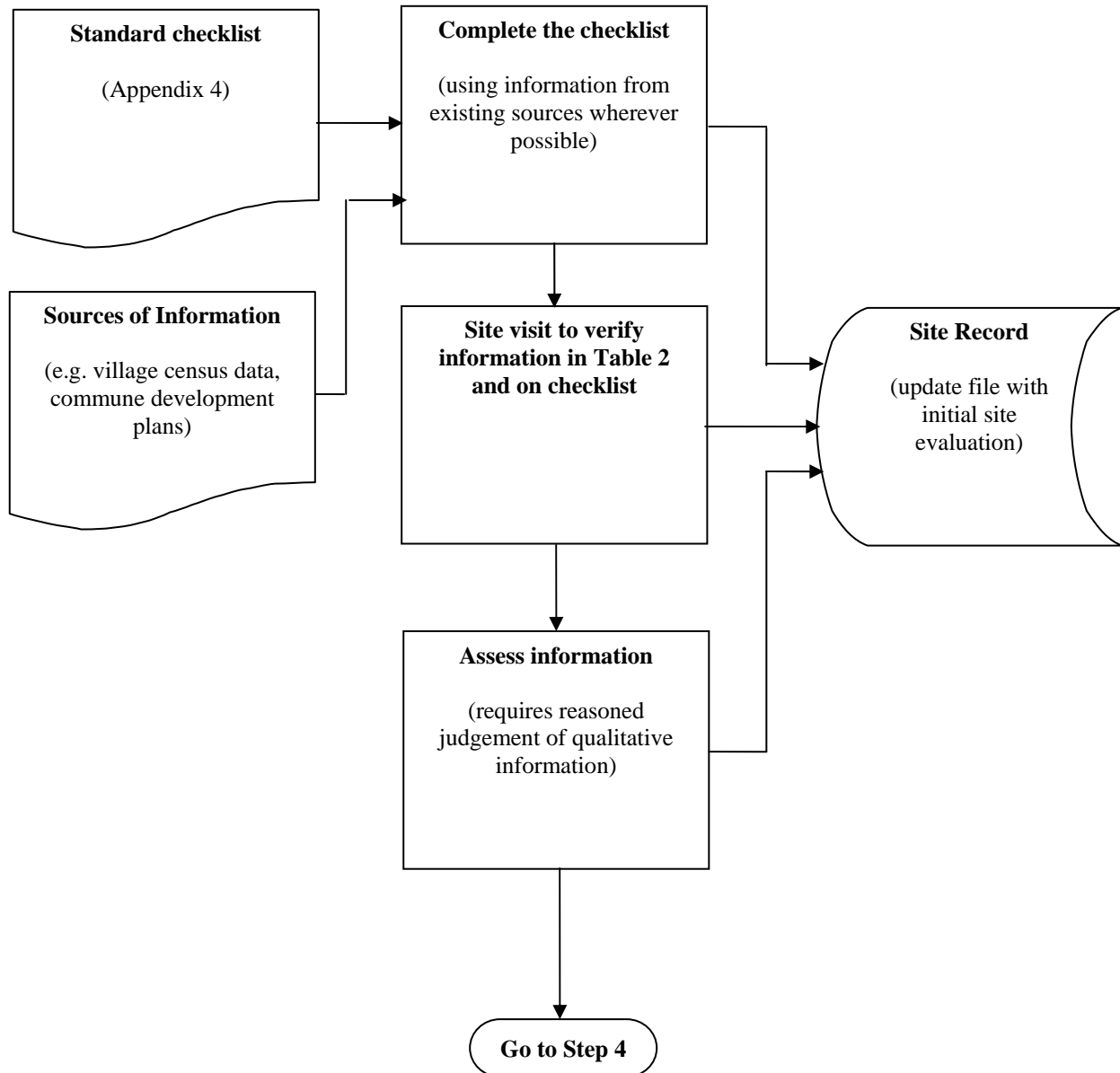
1. Preliminary Identification of Potential Tree Planting Areas



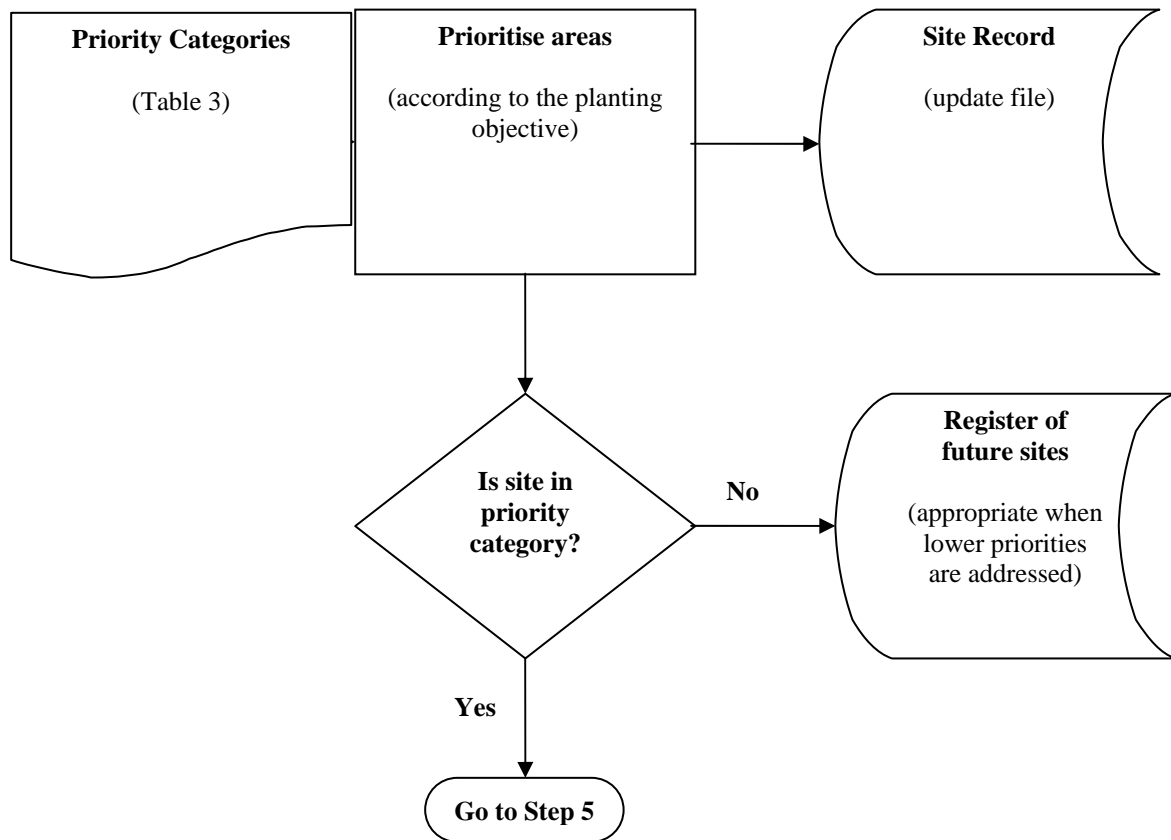
2. Assessment of Land Tenure/Resource Access Security



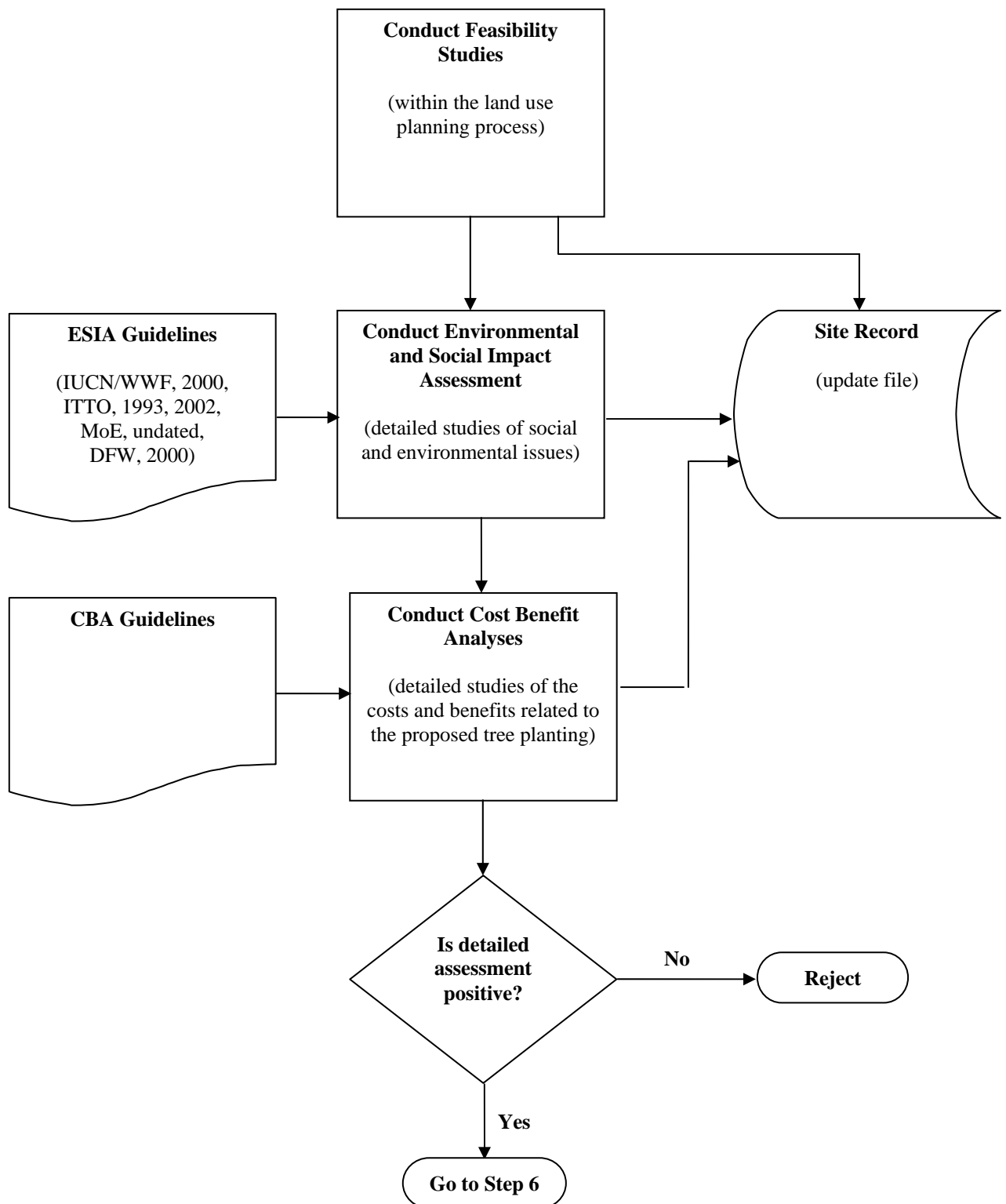
3. Preliminary Assessment of Site Conditions (Pre-Feasibility)



4. Categorisation of Areas for Tree Planting



5. Detailed Assessment (Feasibility)



6. Funding and Implementation

